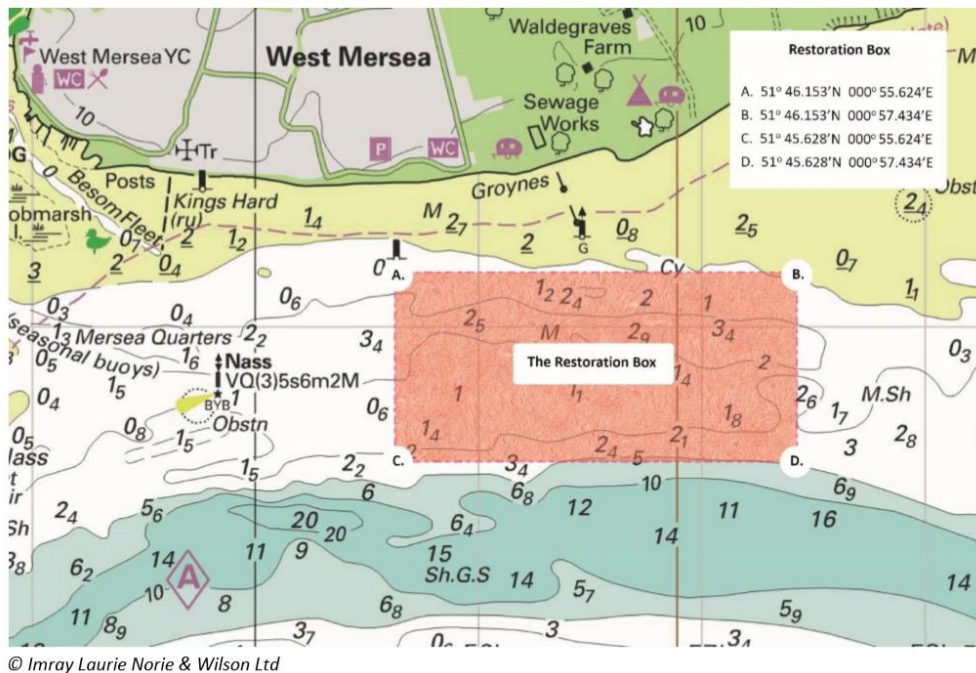


## NOTICE TO MARINERS

### NATIVE OYSTER RESTORATION WORKS

#### WEST MERSEA

Starting **Thursday 4<sup>th</sup> November 2021** works will commence on the Essex native oyster restoration project within a defined restoration box, of which the north-west corner is located approximately 500m offshore to the south-east of West Mersea (hereafter referred to as the 'Restoration Box'). The Restoration Box is approximately 2000m (west to east) by 1000m (north to south).



This work will consist of scientific monitoring of current restoration areas within the Restoration Box. These works are expected to be **concluded by 5<sup>th</sup> November 2021**.

Mariners are reminded that past work within the restoration box includes the deposition of shell and stone material, **Mariners are therefore requested to be mindful of the raised seabed in this location**. Additionally, mariners are reminded of the deployment of spat collectors in 2019 (large metal frames) within the area marked by large, yellow danger marks. **This smaller marked area should not be entered.**

Should you have any queries about the works, please contact [EssexNativeOyster@zsl.org](mailto:EssexNativeOyster@zsl.org)