

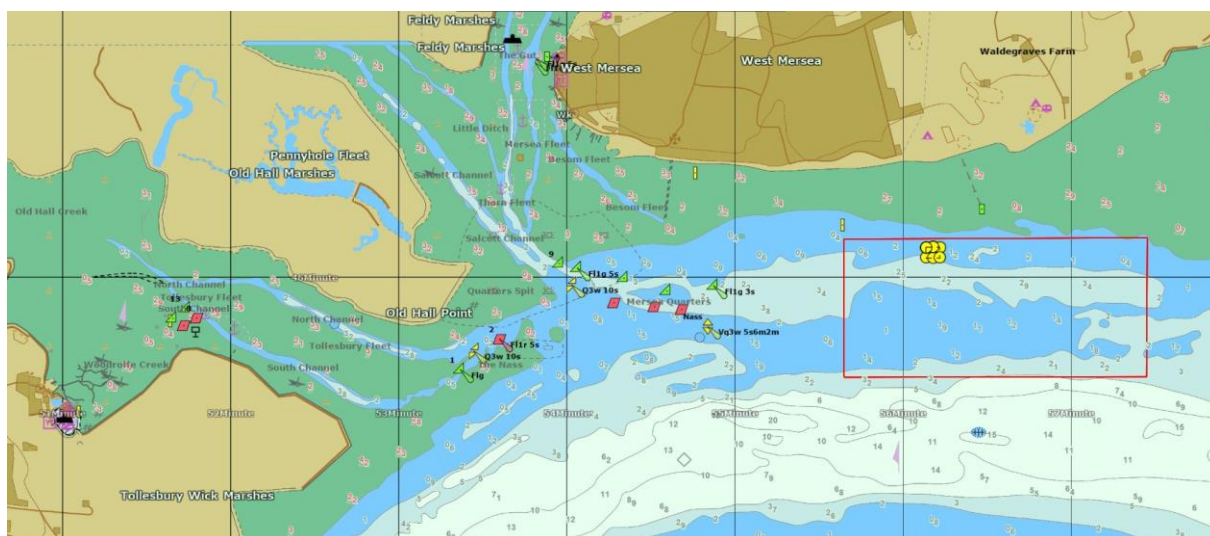
NOTICE TO MARINERS [UPDATE]

NATIVE OYSTER RESTORATION – SPAT COLLECTOR FRAMES & MARKER BUOYS

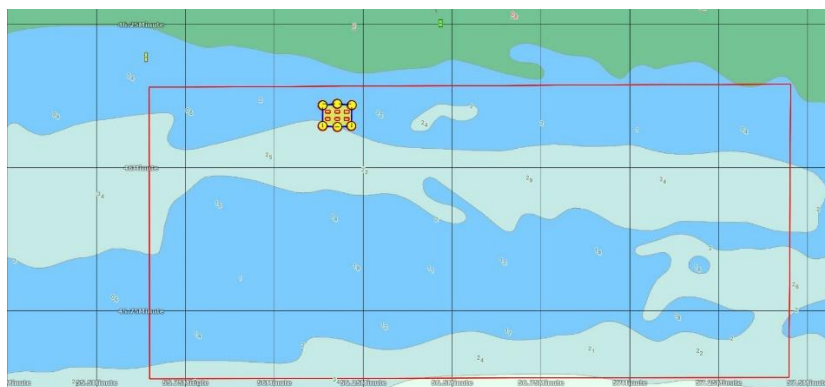
WEST MERSEA

In June, works will continue for the Essex native oyster restoration project within a defined restoration box, of which the north-west corner is located approximately 500m offshore to the south-east of West Mersea (hereafter referred to as the '**Restoration Box**'). The Restoration Box is approximately 2000m (west to east) by 1000m (north to south) (demarcated by red line on chart below).

The works will include the **deployment of six spat collectors**. These are A-frame structures that are approximately 1 metre wide, 2.4 metres long and 1.2 metres tall. The location of the spat collectors will be **marked by six yellow marker buoys with a flashing yellow light**. The total area will be approximately 75m x 95m.



© UK Hydrographic Office



Marker buoys

Large red rectangle – Restoration Box, yellow circles – marker buoys, and small red squares – spat collector frames

North West Buoy		North Buoy		North East Buoy
51° 46.1087' N		51° 46.1111' N		51° 46.1089' N
0° 56.1358' E		0° 56.1767' E		0° 56.2176' E
Collector 1		Collector 2		Collector 3
51° 46.0975' N		51° 46.0973' N		51° 46.0973' N
0° 56.1504' E		0° 56.1771' E		0° 56.2034' E
Collector 4		Collector 5		Collector 6
51° 46.0848' N		51° 46.0844' N		51° 46.0844' N
0° 56.1495' E		0° 56.1771' E		0° 56.2034' E
South West Buoy		South Buoy		South East Buoy
51° 46.0726' N		51° 46.0710' N		51° 46.0724' N
0° 56.1355' E		0° 56.1770' E		0° 56.2163' E

Coordinates of the spat collectors and marker buoys

The works will be carried out from the vessel 'Jean T' (17m x 5m).

The deployment of the spat collectors is dependent on water temperatures. The works are **anticipated to start 19th June 2019 or soon thereafter**. It is anticipated that the installation works will be complete before 31st July 2019. During the works, **mariners are requested to keep clear and avoid any unnecessary wash**. On completion of the works, the six spat collectors will remain on the seabed and the six marker buoys will remain on the surface in the Restoration Box. Mariners are therefore **requested to be mindful of these above water and underwater structures in this location**.

Should you have any queries about the works, please contact EssexNativeOyster@zsl.org